



**Concept sketch - Competition phase**  
 Copyright holder  
 Rogers Stirk Harbour + Partners  
 Photographer  
 Rogers Stirk Harbour + Partners  
 Photographer's email



**The Lloyd's building - Rogers' competition proposal**  
 Copyright holder  
 Rogers Stirk Harbour + Partners  
 Photographer  
 Rogers Stirk Harbour + Partners  
 Photographer's email



**National Gallery Extension, London, UK**  
 Copyright holder  
 Rogers Stirk Harbour + Partners  
 Photographer  
 Rogers Stirk Harbour + Partners  
 Photographer's email



**The various activities are housed on a great 'stage' overlooking a new park.**  
 Copyright holder  
 Rogers Stirk Harbour + Partners  
 Photographer  
 Rogers Stirk Harbour + Partners  
 Photographer's email



**External visualisation - The reflective pool**  
 Copyright holder  
 Rogers Stirk Harbour + Partners  
 Photographer  
 Rogers Stirk Harbour + Partners  
 Photographer's email



**Timber masterplan model, 1:2000 scale**  
 Copyright holder  
 Rogers Stirk Harbour + Partners  
 Photographer  
 Mike Fairbrass / RSHP  
 Photographer's email



**Competition drawing**  
 Copyright holder  
 Rogers Stirk Harbour + Partners  
 Photographer  
 Rogers Stirk Harbour + Partners  
 Photographer's email



**CGI visualisation**  
 Copyright holder  
 Rogers Stirk Harbour + Partners  
 Photographer  
 Rogers Stirk Harbour + Partners  
 Photographer's email



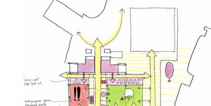
**Acrylic light model view showing the overall composition with the and the two wings of administrative accommodation**  
 Copyright holder  
 Rogers Stirk Harbour + Partners  
 Photographer  
 Eamonn O'Mahony  
 Photographer's email



**View of Lu Jia Zu before redevelopment**  
 Copyright holder  
 Unknown  
 Photographer  
 Unknown  
 Photographer's email



**Shanghai Lu Jia Zu after 1992**  
 Copyright holder  
 Unknown  
 Photographer  
 Image taken from: [http://topsectoren.nl/document/en/high-tech/Elektrisch-rijden\\_2014-07-03\\_141.pdf](http://topsectoren.nl/document/en/high-tech/Elektrisch-rijden_2014-07-03_141.pdf)  
 Photographer's email



**Public Realm Zoning**  
 Copyright holder  
 Rogers Stirk Harbour + Partners  
 Photographer  
 Rogers Stirk Harbour + Partners  
 Photographer's email



**Concept sketch**  
 Copyright holder  
 Rogers Stirk Harbour + Partners  
 Photographer  
 Mike Davies / RSHP  
 Photographer's email



**Concept sketch - Section**  
 Copyright holder  
 Rogers Stirk Harbour + Partners  
 Photographer  
 Graham Stirk / RSHP  
 Photographer's email



**Presentation competition section model, 1:200 scale**  
 Copyright holder  
 Rogers Stirk Harbour + Partners  
 Photographer  
 Eamonn O'Mahony  
 Photographer's email



**Viewing corridor to St Paul's**  
 Copyright holder  
 Rogers Stirk Harbour + Partners  
 Photographer  
 Rogers Stirk Harbour + Partners  
 Photographer's email



**The Centre was conceived as a radical 'university of the streets', opening up a museum alienated by traditional museums**  
 Copyright holder  
 Rogers Stirk Harbour + Partners  
 Photographer  
 Piano + Rogers  
 Photographer's email



**Site plan - competition scheme**  
 Copyright holder  
 Rogers Stirk Harbour + Partners  
 Photographer  
 Rogers Stirk Harbour + Partners  
 Photographer's email



**Timber competition section model, scale 1:200**  
 Copyright holder  
 Rogers Stirk Harbour + Partners  
 Photographer  
 Philip Jackson  
 Photographer's email



**'Playchoir' model (not to scale)**  
 Copyright holder  
 Rogers Stirk Harbour + Partners  
 Photographer  
 Rogers Stirk Harbour + Partners  
 Photographer's email



**Proposed scheme for the South Bank, from the River Thames**  
 Copyright holder  
 Hayes Davidson  
 Photographer  
 Hayes Davidson  
 Photographer's email  
[hello@hayesdavidson.com](mailto:hello@hayesdavidson.com)



**Roof and contact stands**  
 Copyright holder  
 Yoshio Futagawa  
 Photographer  
 Yoshio Futagawa  
 Photographer's email  
 @Yoshio\_Futagawa



**Entrance to 88 Wood Street**  
 Copyright holder  
 Katsuhisa Kida  
 Photographer  
 Katsuhisa Kida  
 Photographer's email  
[kida@fototecca.jp](mailto:kida@fototecca.jp)



**Floorplan of Westmount Square, Montreal**  
 Copyright holder  
 © VIEW PICTURES LTD. The reproduction by whatever means of the whole or part of any image (including, without limitation, side projection, artist's reference, artist's illustration, layout or presentation of images) is strictly forbid...  
 Photographer  
 Chicago History Museum  
 Photographer's email



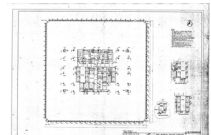
**Visualisation of the proposed Crystal palace, within the context of the existing buildings**  
 Copyright holder  
 Rogers Stirk Harbour + Partners  
 Photographer  
 Rogers Stirk Harbour + Partners  
 Photographer's email



**Pienza 1, Italy, the compact city**  
 Copyright holder  
 Unknown  
 Photographer  
 Image taken from: <http://www.traveldestination.com/visiting/pienza-a-quiet-town-in-italy/>  
 Photographer's email



**Mid-town Manhattan**  
 Copyright holder  
 Unknown  
 Photographer  
 Image taken from: <https://plus.google.com/101754251708615285012/posts>  
 Photographer's email



**Original World Trade Centre floor plan**  
 Copyright holder  
 Not known - image taken from <http://www.abovetojpeg.com/forum/thread721533pg3>  
 Photographer  
 Minoru Yamasaki  
 Photographer's email



**Doha waterfront, Qatar**  
 Copyright holder  
 Not known  
 Photographer  
 Sophie James  
 Photographer's email  
<http://www.sophiejames.com>



**Office floor section study model, scale 1/2" = 1'-0" or 1:48**  
 Copyright holder  
 Rogers Stirk Harbour + Partners  
 Photographer  
 Mike Fairbrass / RSHP Model Shop  
 Photographer's email



**The roofscape of Lloyd's become a distinctive landmark in London's skyline in 1987**  
 Copyright holder  
 Arcad  
 Photographer  
 Richard Bryant  
 Photographer's email  
[arcad@arcad.co.uk](mailto:arcad@arcad.co.uk)



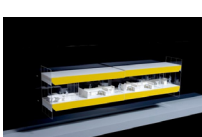
**View of the Leadenhall Building in the London skyline from the West along the River Thames**  
 Copyright holder  
 British Land/Oxford Properties  
 Photographer  
 Richard Bryant  
 Photographer's email  
[arcad@arcad.co.uk](mailto:arcad@arcad.co.uk)



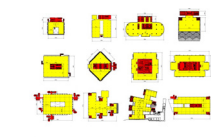
**Pienza: The new and old, renaissance and medieval**  
 Copyright holder  
 Unknown - image taken from <http://www.traveldestination.com/visiting/pienza-a-quiet-town-in-italy/>  
 Photographer  
 Photographer's email



**Office floor section study model, scale 1/2" = 1'-0" or 1:48**  
 Copyright holder  
 Rogers Stirk Harbour + Partners  
 Photographer  
 Mike Fairbrass / RSHP Model Shop  
 Photographer's email



**Office floor section study model, scale 1/2" = 1'-0" or 1:48**  
 Copyright holder  
 Rogers Stirk Harbour + Partners  
 Photographer  
 Mike Fairbrass / RSHP Model Shop  
 Photographer's email



**Workplace typology**  
 Copyright holder  
 Plan comparison sheets  
 Copyright holder  
 Rogers Stirk Harbour + Partners  
 Photographer  
 Rogers Stirk Harbour + Partners  
 Photographer's email



**The Leadenhall Building in relation to St Paul's Cathedral**  
 Copyright holder  
 Rogers Stirk Harbour + Partners  
 Photographer  
 Rory Gardiner  
 Photographer's email  
 studio@rory-gardiner.com



**Level 6 plan (Typical low level plan)**  
 Copyright holder  
 Rogers Stirk Harbour + Partners  
 Photographer  
 Rogers Stirk Harbour + Partners  
 Photographer's email



**Plan Level 07**  
 Copyright holder  
 Rogers Stirk Harbour + Partners  
 Photographer  
 Rogers Stirk Harbour + Partners  
 Photographer's email



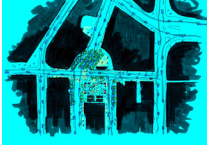
**Salisbury Cathedral**  
 Copyright holder  
 Not known - image taken from: <http://www.ihaveap.com/2011/11/18/stunning-hd-wallpapers-for-your-de-sky09-40/>  
 Photographer  
 Photographer's email



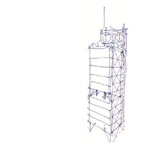
**'Celestial' screens**  
 Copyright holder  
 Rogers Stirk Harbour + Partners  
 Photographer  
 Mark Gorton / RSHIP  
 Photographer's email



**A new urban landmark on the skyline of Mexico City, the tower marks the gateway to the Paseo de la Reforma from Chapultepec Park**  
 Copyright holder  
 Rogers Stirk Harbour + Partners  
 Photographer  
 James Leahem / RSHIP  
 Photographer's email



**Site Plan**  
 Copyright holder  
 Rogers Stirk Harbour + Partners  
 Photographer  
 Andrew Partridge / RSHIP  
 Photographer's email



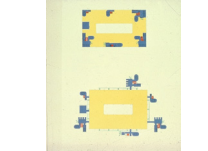
**Concept sketch**  
 Copyright holder  
 Rogers Stirk Harbour + Partners  
 Photographer  
 Ivan Harbour / RSHIP  
 Photographer's email



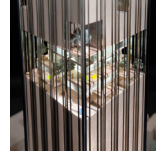
**The piazza is a popular meeting place in the city**  
 Copyright holder  
 Unknown  
 Photographer  
 Photographer's email



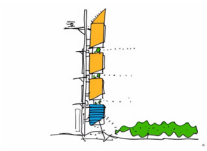
**Stage 1 - Hotel sky lobby section**  
 Copyright holder  
 Rogers Stirk Harbour + Partners  
 Photographer  
 Mark Gorton / RSHIP  
 Photographer's email



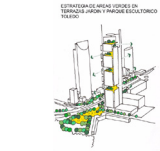
**Circulation towers (blue) are arranged around the perimeter of the building, maximising available space and providing large, uninterrupted, flexible floorplans.**  
 Copyright holder  
 Rogers Stirk Harbour + Partners  
 Photographer  
 Rogers Stirk Harbour + Partners  
 Photographer's email



**Stage 1 competition model - Mid-level skygardens**  
 Copyright holder  
 Rogers Stirk Harbour + Partners  
 Photographer  
 Mike Fairbrass / RSHIP  
 Photographer's email



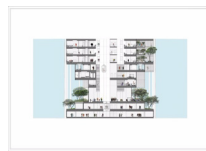
**Vertical organisation of space**  
 Copyright holder  
 Rogers Stirk Harbour + Partners  
 Photographer  
 Rogers Stirk Harbour + Partners  
 Photographer's email



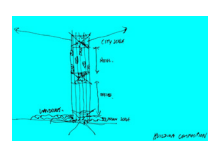
**Vertical communities**  
 Copyright holder  
 Rogers Stirk Harbour + Partners  
 Photographer  
 Rogers Stirk Harbour + Partners  
 Photographer's email



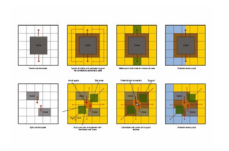
**Level 28 plan - typical level with garden**  
 Copyright holder  
 Rogers Stirk Harbour + Partners  
 Photographer  
 Rogers Stirk Harbour + Partners  
 Photographer's email



**Stage 1 - Hotel sky lobby section**  
 Copyright holder  
 Rogers Stirk Harbour + Partners  
 Photographer  
 Rogers Stirk Harbour + Partners  
 Photographer's email



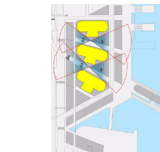
**Stage 1 - Building composition concept sketch**  
 Copyright holder  
 Rogers Stirk Harbour + Partners  
 Photographer  
 Ivan Harbour / RSHIP  
 Photographer's email



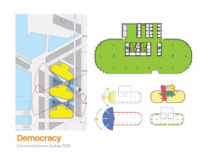
**Stage 2 - Floor plate zoning**  
 Copyright holder  
 Rogers Stirk Harbour + Partners  
 Photographer  
 Rogers Stirk Harbour + Partners  
 Photographer's email



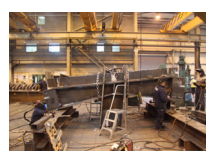
**Framing Sydney**  
 Copyright holder  
 Unknown  
 Photographer  
 Photographer's email



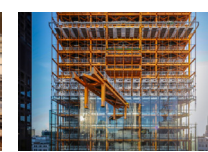
**Floorplans**  
 Copyright holder  
 Rogers Stirk Harbour + Partners  
 Photographer  
 Rogers Stirk Harbour + Partners  
 Photographer's email



**These vertical villages - which include communal breakout spaces and meeting areas - enable visual and physical connections to be made between floors and encourage social interaction between users and visitors throughout the building**  
 Copyright holder  
 Rogers Stirk Harbour + Partners  
 Photographer  
 Rogers Stirk Harbour + Partners  
 Photographer's email



**Node 6 - prefabrication in the factory**  
 Copyright holder  
 Rogers Stirk Harbour + Partners  
 Photographer  
 Dirk Krolkowski / RSHIP  
 Photographer's email



**Table is installed to the North Core.**  
 Copyright holder  
 Paul Raftery  
 Photographer  
 Paul Raftery  
 Photographer's email  
 paul@rafphoto.com



**Node structure**  
 Copyright holder  
 Rogers Stirk Harbour + Partners  
 Photographer  
 Rogers Stirk Harbour + Partners  
 Photographer's email



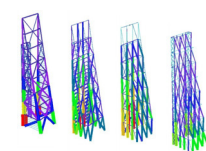
**Building 1, 2, 3**  
 Copyright holder  
 Jean de Calan  
 Photographer  
 Jean de Calan  
 Photographer's email  
 jeandecalan@free.fr



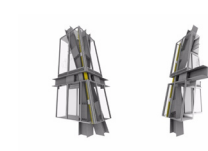
**Tower 2 facade detail**  
 Copyright holder  
 Unknown  
 Photographer  
 Unknown  
 Photographer's email



**Facade development**  
 Copyright holder  
 Rogers Stirk Harbour + Partners  
 Photographer  
 Rogers Stirk Harbour + Partners  
 Photographer's email



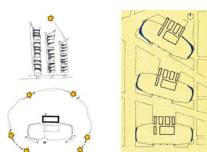
**Optimising the megaframe**  
 Copyright holder  
 Anup  
 Photographer  
 Anup  
 Photographer's email  
 natalie.causley@anup.com



**Node 6 - With cladding in colour (annotation removed).**  
 Copyright holder  
 Rogers Stirk Harbour + Partners  
 Photographer  
 Rogers Stirk Harbour + Partners  
 Photographer's email



**Render from within the bus level**  
 Copyright holder  
 Rogers Stirk Harbour + Partners  
 Photographer  
 Rogers Stirk Harbour + Partners  
 Photographer's email



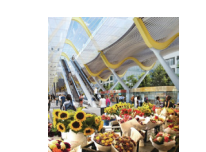
**Paths of sunlight**  
 Copyright holder  
 Rogers Stirk Harbour + Partners  
 Photographer  
 Aeron Massingham / RSHIP  
 Photographer's email



**Aerial view of construction progress**  
 Copyright holder  
 Rogers Stirk Harbour + Partners  
 Photographer  
 Rogers Stirk Harbour + Partners  
 Photographer's email



**The clear glazed facades are clad with motorised aluminium louvers**  
 Copyright holder  
 Katsuhisa Kida  
 Photographer  
 Katsuhisa Kida  
 Photographer's email  
 kida@fotoeca.jp



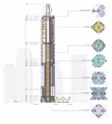
**Visualisation of the market area of the terminal**  
 Copyright holder  
 Rogers Stirk Harbour + Partners  
 Photographer  
 Rogers Stirk Harbour + Partners  
 Photographer's email



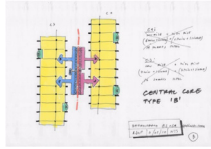
**Visualisation of the market area of the terminal**  
 Copyright holder  
 Rogers Stirk Harbour + Partners  
 Photographer  
 Rogers Stirk Harbour + Partners  
 Photographer's email



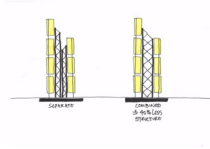
**Tower and terminal timber competition model, scale 1:500**  
 Copyright holder  
 Rogers Stirk Harbour + Partners  
 Photographer  
 Rogers Stirk Harbour + Partners  
 Photographer's email



Caption  
First Street Elevation  
Copyright holder  
Rogers Stirk Harbour + Partners  
Photographer  
Rogers Stirk Harbour + Partners  
Photographer's email



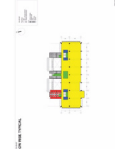
Caption  
Central core - Type B  
Copyright holder  
Rogers Stirk Harbour + Partners  
Photographer  
Rogers Stirk Harbour + Partners  
Photographer's email



Caption  
Separate and combined structure  
Copyright holder  
Rogers Stirk Harbour + Partners  
Photographer  
Rogers Stirk Harbour + Partners  
Photographer's email



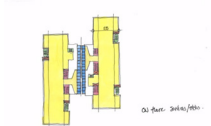
Caption  
Ground plane  
Copyright holder  
Rogers Stirk Harbour + Partners  
Photographer  
Rogers Stirk Harbour + Partners  
Photographer's email



Caption  
Shape of floorplate and tower set-out  
Copyright holder  
Rogers Stirk Harbour + Partners  
Photographer  
Rogers Stirk Harbour + Partners  
Photographer's email



Caption  
Early massing and core studies  
Copyright holder  
Rogers Stirk Harbour + Partners  
Photographer  
Rogers Stirk Harbour + Partners  
Photographer's email



Caption  
On floor services  
Copyright holder  
Rogers Stirk Harbour + Partners  
Photographer  
Rogers Stirk Harbour + Partners  
Photographer's email



Caption  
Scale and legibility  
Copyright holder  
Rogers Stirk Harbour + Partners  
Photographer  
Rogers Stirk Harbour + Partners  
Photographer's email



Caption  
South Barangaroo  
Copyright holder  
Rogers Stirk Harbour + Partners  
Photographer  
Rogers Stirk Harbour + Partners  
Photographer's email



Caption  
Early massing and core studies  
Copyright holder  
Rogers Stirk Harbour + Partners  
Photographer  
Rogers Stirk Harbour + Partners  
Photographer's email



Caption  
Facade study  
Copyright holder  
Rogers Stirk Harbour + Partners  
Photographer  
Rogers Stirk Harbour + Partners  
Photographer's email



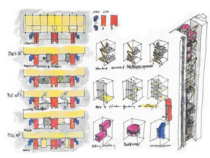
Caption  
Presentation model  
Copyright holder  
Rogers Stirk Harbour + Partners  
Photographer  
Rogers Stirk Harbour + Partners  
Photographer's email



Caption  
Barangaroo sketch  
Copyright holder  
Rogers Stirk Harbour + Partners  
Photographer  
Rogers Stirk Harbour + Partners  
Photographer's email



Caption  
Office core  
Copyright holder  
Rogers Stirk Harbour + Partners  
Photographer  
Rogers Stirk Harbour + Partners  
Photographer's email



Caption  
Kit of parts  
Copyright holder  
Rogers Stirk Harbour + Partners  
Photographer  
Rogers Stirk Harbour + Partners  
Photographer's email



Caption  
photo of finished building from Japanese map. Not built by RRP. DO NOT USE, CHECK COPYRIGHT ISSUES  
Copyright holder  
Not built by RRP. DO NOT USE, CHECK COPYRIGHT ISSUES  
Photographer  
MREC  
Photographer's email



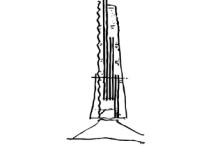
Caption  
Photo of finished building from Japanese map. Not built by RRP. DO NOT USE, CHECK COPYRIGHT ISSUES  
Copyright holder  
MREC  
Photographer  
Not built by RRP. DO NOT USE, CHECK COPYRIGHT ISSUES  
Photographer's email



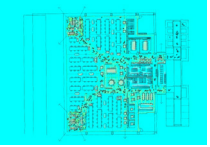
Caption  
Coloured elevation  
Copyright holder  
Rogers Stirk Harbour + Partners  
Photographer  
Rogers Stirk Harbour + Partners  
Photographer's email



Caption  
Coloured elevation  
Copyright holder  
Rogers Stirk Harbour + Partners  
Photographer  
Rogers Stirk Harbour + Partners  
Photographer's email



Caption  
Concept sketch  
Copyright holder  
Rogers Stirk Harbour + Partners  
Photographer  
Rogers Stirk Harbour + Partners  
Photographer's email



Caption  
Floorplan for Rogers Stirk Harbour + Partners on the 14th floor  
Copyright holder  
Rogers Stirk Harbour + Partners  
Photographer  
Rogers Stirk Harbour + Partners  
Photographer's email



Caption  
View from South East corner of Central Park looking South West towards the Tower  
Copyright holder  
Sarah Rowlands  
Photographer  
Sarah Rowlands - www.sarah-rowlands.com  
Photographer's email  
mail@sarah-rowlands.com



Caption  
View from South East corner of Central Park looking South West towards the Tower  
Copyright holder  
Rogers Stirk Harbour + Partners  
Photographer  
Rogers Stirk Harbour + Partners  
Photographer's email



Caption  
View from South East corner of Central Park looking South West towards the Tower  
Copyright holder  
Sarah Rowlands  
Photographer  
Sarah Rowlands - www.sarah-rowlands.com  
Photographer's email  
mail@sarah-rowlands.com



Caption  
The city warehouse studio  
Copyright holder  
Rogers Stirk Harbour + Partners  
Photographer  
Rogers Stirk Harbour + Partners  
Photographer's email



Caption  
Partners descend the escalator in the Leadenhall Building  
Copyright holder  
Rogers Stirk Harbour + Partners  
Photographer  
Maurice Brennan / RSHP  
Photographer's email



Caption  
Floorplate studies  
Copyright holder  
Rogers Stirk Harbour + Partners  
Photographer  
Rogers Stirk Harbour + Partners  
Photographer's email



Caption  
The debating chamber funnel sits at the centre of the public event space  
Copyright holder  
The Photographer. RRP own media rights - use AGREED  
Photographer  
Katsuhisa Kida  
Photographer's email  
kida@fototeca.jp



Caption  
The Rogers office occupies an entire block of Thames Wharf  
Copyright holder  
Unknown  
Photographer  
Unknown  
Photographer's email



Caption  
View across the bay towards Barangaroo  
Copyright holder  
Sarah Rowlands  
Photographer  
Sarah Rowlands - www.sarah-rowlands.com  
Photographer's email  
mail@sarah-rowlands.com



Caption  
Barangaroo South  
Copyright holder  
Rogers Stirk Harbour + Partners  
Photographer  
Rogers Stirk Harbour + Partners  
Photographer's email